

wall mounting socket outlet - 7 poles, housing dimensions 126x83

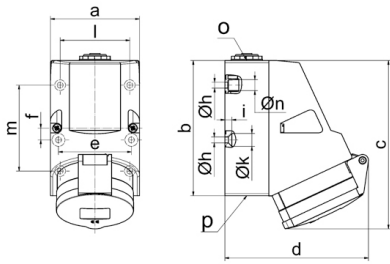


| Product description | |
|---------------------------|--------------------------------|
| BALS-Prd.-Nr | 11480 |
| EAN | 4024941114806 |
| product category | TE wall mounting socket outlet |
| current | 16A |
| number of poles | 7p |
| number of poles | 6p+PE |
| position of earth contact | 9 h |
| voltage | 230V |

| Product description | |
|------------------------|--|
| frequency | 50 and 60Hz |
| protection degree | IP44 |
| colour code | blue RAL 5015 |
| Colour of appliance | Hinged lid blue, Housing bottom grey, Housing top grey, Collar grey |
| connection design | with screw terminal |
| maximum conductor size | 4,0 qmm |
| cable entry | 1xM25 top, 2xM25 bottom |
| Height | 154mm |
| Width | 83mm |
| Depth | 130mm |
| dimension of enclosure | 126x83 mm (HxW) |
| material of enclosure | Polyamide |
| contact | The contact carrier is made of high temperature resistant material, the contacts are brass nickel plated |

| Additional technical information | |
|----------------------------------|---|
| | The cable entry is one at top open and two at bottom closed |
| | Lower part of housing rotatable by 180° |
| | 4 cut out fixing holes in the lower part of housing |

| Logistics data | |
|----------------|------------------|
| Weight/pcs | 0.373 kg / Piece |
| Packaging | Bag |
| Content amount | 1 ST |
| EAN | 4024941114806 |
| Length | 130 mm |
| Width | 83 mm |
| Height | 154 mm |
| Weight | 0.374 kg |
| Volume | 1,661.66 ccm |
| Packaging | Carton |
| Content amount | 10 ST |
| EAN | 4024941969352 |
| Length | 330 mm |
| Width | 216 mm |
| Height | 260 mm |
| Weight | 3.956 kg |
| Volume | 17,062.5 ccm |



1 MB 124

| Ampere | 16 | 32 | | | | | |
|----------------------------|---------|---------|--|--|--|--|--|
| Polzahl | 7 | 7 | | | | | |
| a | 83,0 | 83,0 | | | | | |
| b | 126,0 | 126,0 | | | | | |
| c | 155,0 | 155,0 | | | | | |
| d | 130,0 | 136,0 | | | | | |
| e | 68,0 | 68,0 | | | | | |
| f | 11,0 | 11,0 | | | | | |
| h ø | 5,5 | 5,5 | | | | | |
| i | 6,5 | 6,5 | | | | | |
| k ø | 12,0 | 12,0 | | | | | |
| l | 65,0 | 65,0 | | | | | |
| m | 80,0 | 80,0 | | | | | |
| n ø | 10,0 | 10,0 | | | | | |
| o | M25 | M25 | | | | | |
| p | 2 x M25 | 2 x M25 | | | | | |
| Leiter mm ² min | 1,5 | 2,2 | | | | | |
| Leiter mm ² max | 4 | 10 | | | | | |